



A proven winner improved with an updated fit, beefier rib knit details and a three-panel hood. It's also colorfast and resists shrinkage.

- 9-ounce, 65/35 ring spun combed cotton/poly fleece
- Twill-taped neck
- Dyed-to-match drawcord
- 2x2 rib knit cuffs and hem
- Fully coverseamed
- Set-in sleeves
- Front pouch pocket

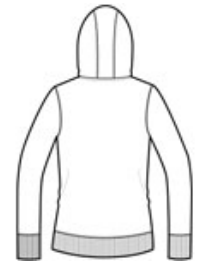
**Please note: This product is transitioning from woven labels to tag-free labels. Your order may contain a combination of both labels*

CARE INSTRUCTIONS

Machine wash cold with like colors. Do not bleach. Tumble dry low. Warm iron if necessary.



front



back

HOW TO MEASURE








BUST
Measure under the arm and around the fullest part of the bust with arms down, keeping tape horizontal.

SIZE CHART

	XS	S	M	L	XL	XXL	3XL	4XL
Size	2	4/6	8/10	12/14	16/18	20/22	24/26	28/30
Bust	32-34	35-36	37-38	39-41	42-44	45-47	48-51	52-55

COLOR INFORMATION

				
Black PMS NTR BLACK C	Graphite Heather PMS COOL GRAY 11C	Pink Rush PMS 7435C	True Navy PMS 533C	Vintage Heather PMS COOL GRAY 9C